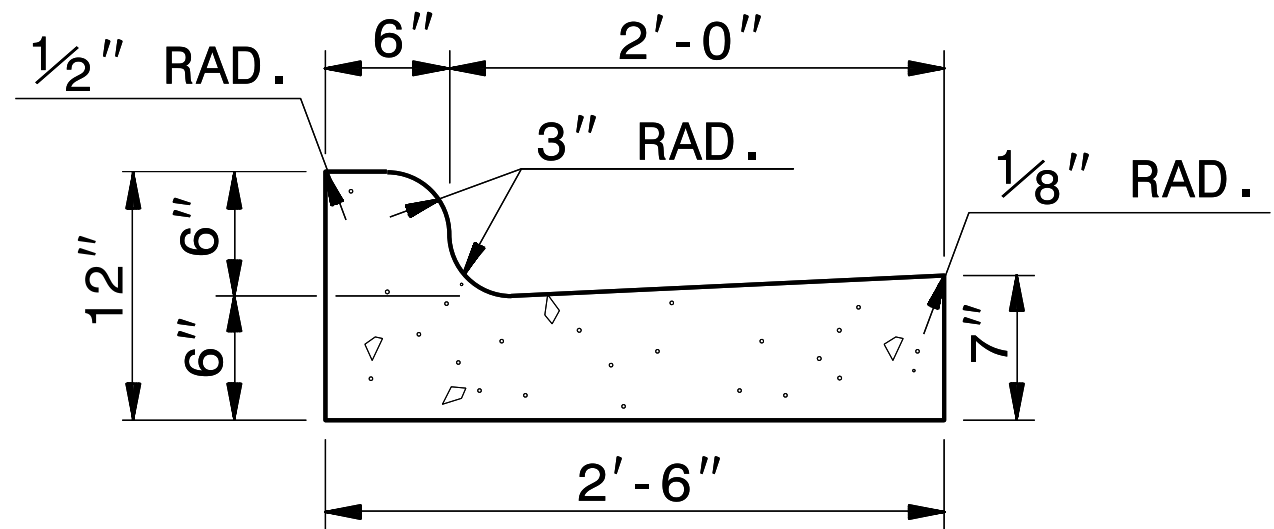
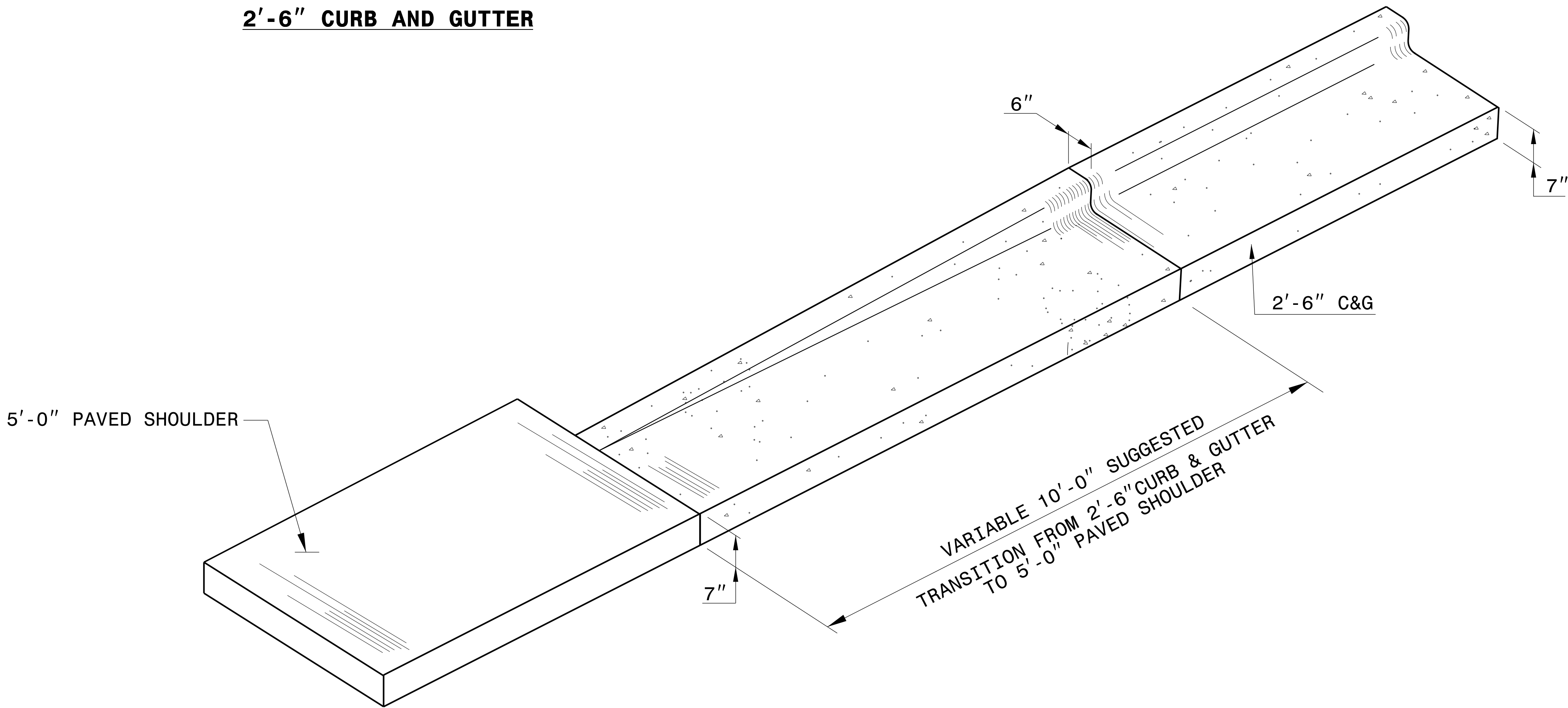


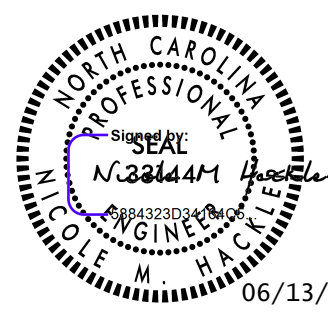
*NOTE: SEE STD. DWG. 846.01
FOR GENERAL NOTES



2'-6" CURB AND GUTTER



ISOMETRIC VIEW OF TRANSITION



06/13/2025

DOCUMENT NOT CONSIDERED FINAL
UNLESS ALL SIGNATURES COMPLETED

**CONTRACT STANDARDS
AND DEVELOPMENT UNIT**
Office 919-707-6950 FAX 919-250-4119

**DETAIL OF 10' TRANSITION
FROM 2'-6" CURB & GUTTER
TO 5'-0" PAVED SHOULDER**

ORIGINAL BY: _____ DATE: _____
MODIFIED BY: rnbritt DATE: 04-13-2016
CHECKED BY: _____ DATE: _____
FILE SPEC: details/nbritt/english/misc/c&g transition sections.dgn